

CORNELL PUMP COMPANY

CO-PILOT™

INDUSTRIAL INTERNET OF THINGS PUMP MONITOR



CORNELL 
Co·Pilot™

Preferred Australian Mining Supplier &
Cornell Pump Partner

SOURCE
Bespoke Pumping Solutions

CO-PILOT™ SPECIFICATIONS



Connect via Cell



5 Sensor Inputs



Remote Start Up



CORNELL Co-Pilot™

THE POWER OF IOT

Cornell Co-Pilot is a monitoring system that connects to your pump to track temperature, vibration, and location using battery power. Co-Pilot can also be powered with a wired connection for continuous monitoring and control system integration. Co-Pilot is part of our Pumps Industrial Internet of Things (IIoT) and reflects our dedication to cutting-edge design and meeting customer needs.

USE THE CO-PILOT TO:

- Plan maintenance
- Check operation
- Reduce manual inspections
- Track pump location
- Demonstrate run conditions to customers on warranty claims
- Improve run time through the maintenance program
- Monitoring at your fingertips

MONITORING AT YOUR FINGER TIPS

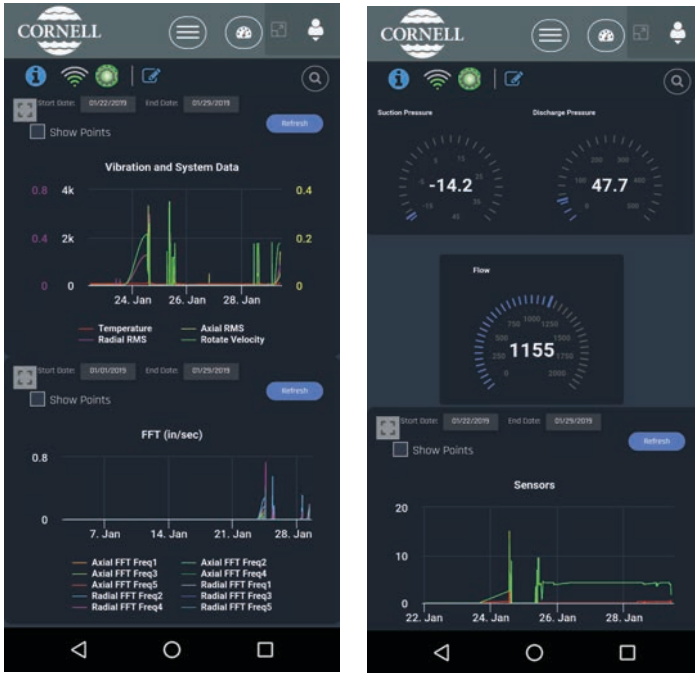
Easily monitor your pump's performance with desktop and mobile apps available for iOS and Android. Receive alarms for out-of-condition operations and view the last GPS location of the pump, all in one convenient platform.

CORNELL CO-PILOT ALLOWS YOU TO:

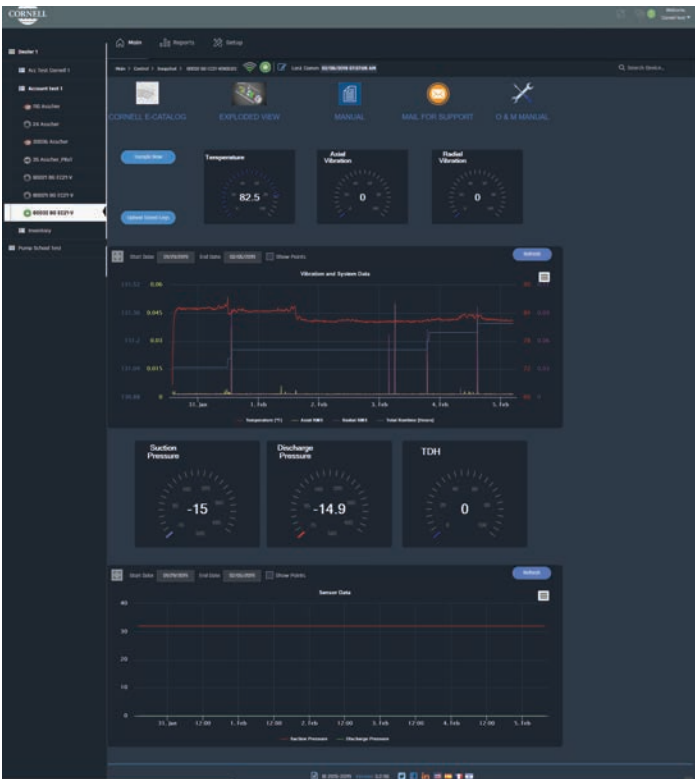
- Cloud monitor single and multiple pumps via IIoT
- With battery power, monitor temperature, vibration, and GPS location
- Through external power, additionally monitor pressure, flow, start/stop operations, and more*
- Track data over time via web-based and mobile apps
- Real-time pump data for maintenance, monitoring performance degradation, and critical conditions
- Receive alerts for preset running conditions

*Requires external sensors; contact Cornell for details.

CO-PILOT™ SPECIFICATIONS



Screenshots from the mobile Co-Pilot app.



Co-Pilot desktop version screenshot.

TECHNICAL SPECIFICATIONS

COMMUNICATION

- 4G LTE cellular cloud connectivity
- Monitor all connected pumps from a single app
- GPS Location Information
- Usable in North America currently with planned updates for Europe, Middle East, Asia, Sub-Saharan Africa & Australia

ON-BOARD MONITORING

- 3-axis vibration monitoring [Inch/Sec]
- Temperature $\pm 5^{\circ}\text{F}$ / $\pm 2.7^{\circ}\text{C}$
- Battery voltage [V]
- Up to 5 additional inputs to connect external sensors

NOTIFICATIONS

- Vibration threshold cross (Axial/Radial RMS)
- Vibration velocity amplitude threshold cross in any of the FFT-selected frequencies
- Operational time threshold cross
- Temperature threshold cross
- Other thresholds set for additional sensors (contact Cornell for information on connecting additional sensors)

DIMENSIONS/ OPERATIONS/STANDARDS

- 3.4" x 3.4" x 1.9" (86mm x 86mm X 48mm)
- Robust insulated enclosure
- IP65 compliant (dust tight and protected against water from a nozzle)
- FCC Part 15 and RoHS compliant
- Temperatures from -22°F / -30°C to 158°F / 70°C

POWER

- External DC power: 12-24 VDC; up to 20 samples/hour and 8 cloud updates per day
- Back-up Battery operable. Three AAA Lithium batteries provide power when external power is not installed or is temporarily unavailable. This offers three months of service at four samples per hour and two daily cloud uploads. Batteries are replaceable.

Get started at
CO-PILOT.CORNELLPUMP.COM

CORNELL PUMP COMPANY

MARKET & PRODUCT LINE



AGRICULTURE



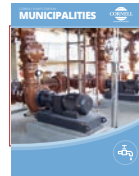
FOOD PROCESS



INDUSTRIAL



MINING



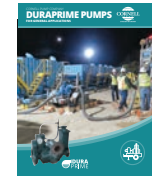
MUNICIPAL



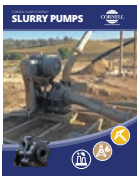
WATER TRANSFER



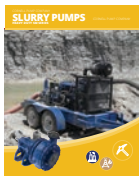
REFRIGERATION



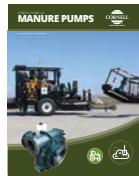
CONSTRUCTION



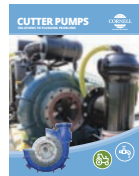
SLURRY



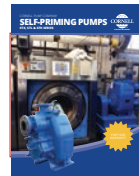
SLURRY SM



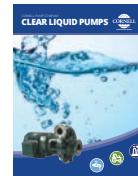
MANURE



CUTTERS



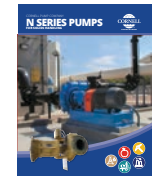
SELF PRIMING



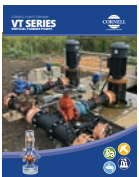
CLEAR LIQUIDS



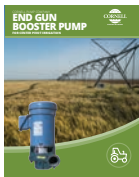
MX SERIES



N SERIES



CYCLONE™



EDGE™



HYDRAULIC SUBS



IMMERSIBLE



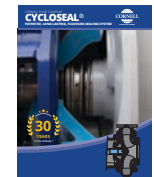
CD4MCU



RUN-DRY™



PRIMING SYSTEMS



CYCLOSEAL®

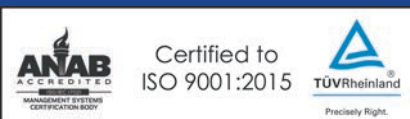
Cycloseal® and Redi-Prime® are Registered Trademarks of Cornell Pump Company.

Cornell pumps and products are the subject of one or more of the following U.S. and foreign patents:

6,074,554; 6,036,434; 6,079,958; 6,309,169; 6,104,949.

23 - IO - BR - 001

CORNELLPUMP.COM
©2023 CORNELL PUMP COMPANY



Cornell Pump Company
Clackamas, Oregon, USA
P: +1 (503) 653-0330
F: +1 (503) 653-0338

SOURCE
Bespoke Pumping Solutions



Source Pumps PTY LTD
22 Peterpaul Way
Truganina, VIC 3029
sourcepumps.com.au
sales@sourcepumps.com.au