

4NHTA-CC

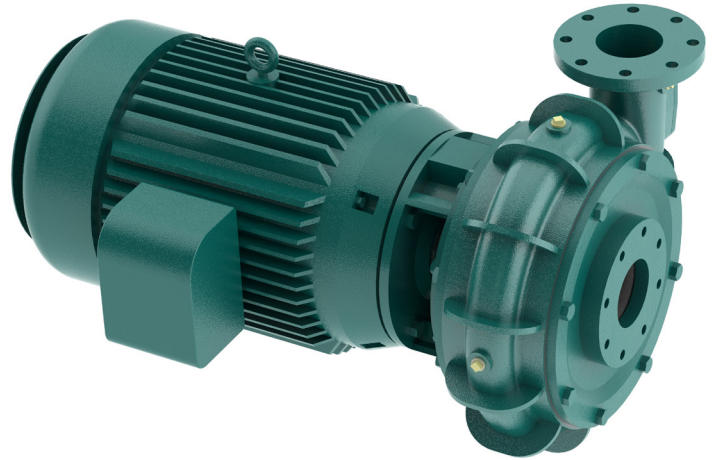


MOUNTING CONFIGURATIONS

4NHTA-EM Engine Mount
 4NHTA-CC Close-Coupled Mount
 4NHTA-VM Vertical Mount

OPERATING LEVELS

MAX FLOW:	1350 GPM	85 L/s
DISCHARGE SIZE:	4"	10.2 cm
SUCTION SIZE:	4"	10.2 cm
SOLIDS HANDLING:	3.0"	7.6 cm
RPM MAX:	1800	1800
MAX HEAD:	180'	54.9 m



A typical picture of the pump is shown. Please contact Cornell Pump Company for further details. All information is approximate and for general guidance only.

PARTS	STANDARD MATERIAL (ALL IRON)
WEAR RINGS	CAST IRON
IMPELLER	CAST IRON
VOLUTE	CAST IRON ASTM
SHAFT	LASALLE STRESSPROOF
SHAFT SLEEVE	416 STAINLESS STEEL
SUCTION COVER	CAST IRON

The 4NHTA pump is designed with Cornell's renowned quality and durability. Available in all iron construction, with Brinell hardness of up to 240. Cornell's patented Cycloseal® design is standard, with a Type 2 or Type 1 single mechanical seal with Buna-N elastomers, stainless steel hardware, and tungsten carbide vs. silicon carbide seal faces for abrasion resistance.

- Excellent NPSHr
- High efficiency design
- Premium hydraulic efficiency
- Cycloseal® design mechanical seal
- Heavy duty construction
- RunDry™ option (Indefinite run dry capability)



AGRICULTURE



FOOD



INDUSTRIAL



MINING



MUNICIPAL



OIL & GAS



REFRIGERATION



RENTAL

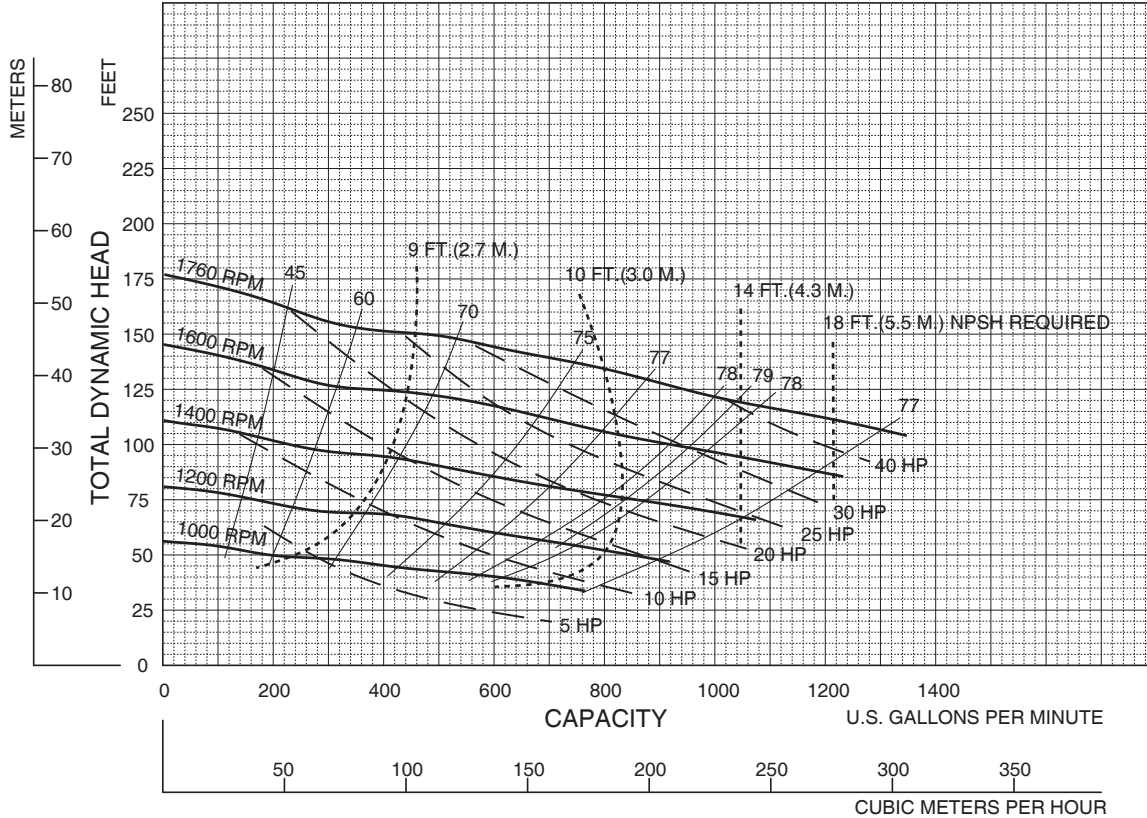
4NHTA-CC



Speed	Impeller Dia.	Style	Solids Dia.	N _S	Suction	Discharge	No. vanes
VARIOUS	12.0"	ENCLOSED	3"	1540	4"	4"	2

Feet x .305 = Meters
 Inches x 25.4 = Millimeters
 GPM x .227 = Cubic Meters/Hour
 GPM x 3.785 = Liters/Minute
 HP x .746 = KW

SINGLE VOLUTE MOUNTING CONFIG.: CC, VM, F, VF, EM, VC



Performances shown are for cool water, close-coupled electric configuration with Cyclostat.[™] Other mounting styles or liquids may require horsepower and/or performance adjustments.

9/15/99



Cornell Pump Company • Portland, Oregon

4NHTA - VARIOUS RPM

NEW PAGE

4NHTA/V