

SPECIFICATION SHEET

CORNELL 200/180

Diesel engine driven pump package



286

Litres Per Second
MAX FLOW

195

Metres
MAX TDH



HEAVY DUTY

Designed and built to last in the harshest environments whilst providing ultimate performance



HIGH FLOW

Industry leading flow capability whilst also handling significant sized solids



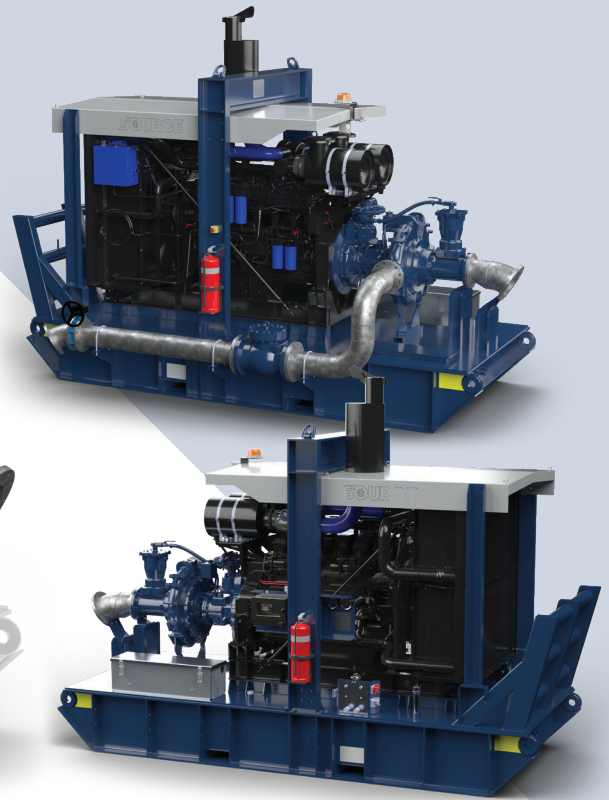
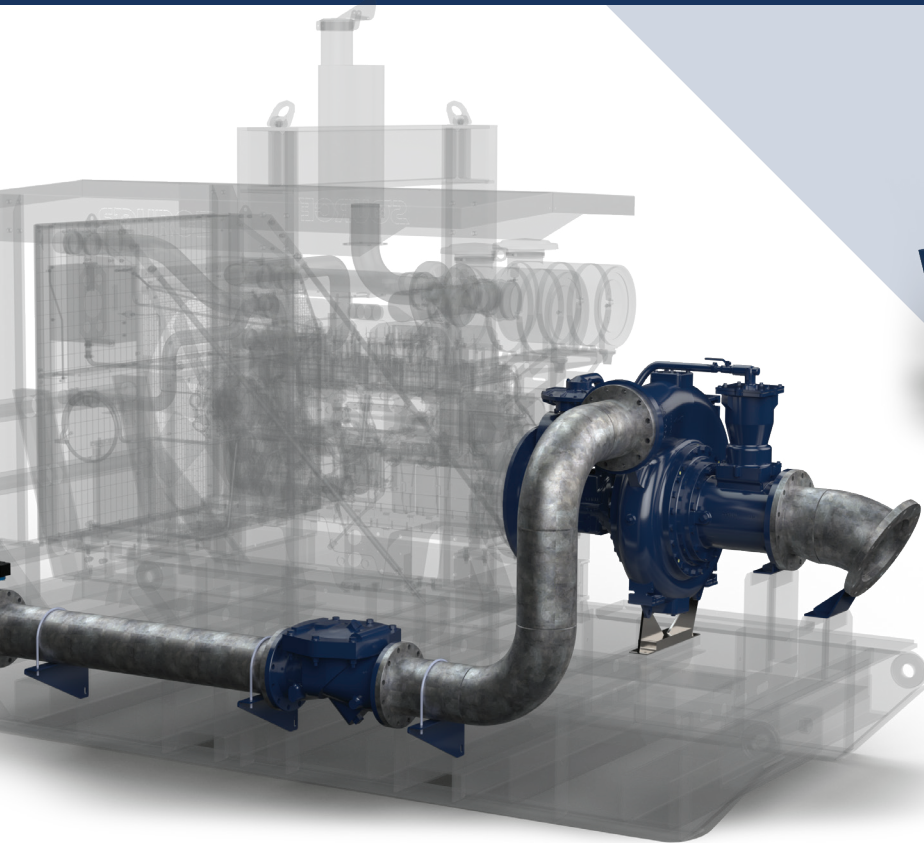
HIGH HEAD

Superior efficiency at unmatched high discharge heads

CORNELL 200/180

Diesel engine driven pump package

SOURCE
Bespoke Pumping Solutions

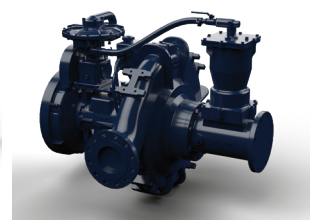
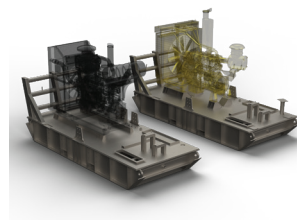
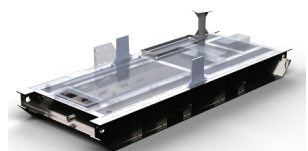
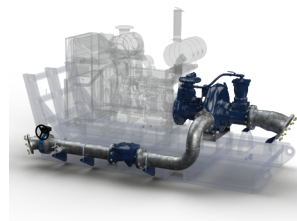


Standard features

- Heavy duty structural steel fabricated skid base complete with canopy over engine with single or dual load rated lifting points on approved lifting beam
- Internal fuel tank custom designed to desired capacity
- Heavy duty nudge bar
- Front and rear eyelet tie down points for transportation
- Fabricated to A54100 & A51554.1
- Two heavy duty 12v batteries in aluminium enclosure
- Control panel on non discharge side housing engine and electrical controls, as well as suction and discharge pressure gauges
- Centralised service panel with 2-pole starter and battery isolation switches, greasing points for pump, Anderson socket, engine coolant and oil drain, build plate identifying major equipment and operating parameters, and three way fuel diverter valve if required
- Additional emergency stop on discharge side of the skid
- Mine spec Work light over looking pump (Additional for engine bay if required)
- Mine spec beacon
- Fire extinguisher
- Engine heat shield and blankets
- Suction spool
- Discharge pipework with appropriately sized check valve and geared butterfly valve terminated at the rear if the skid
- Engines CAT C18, C27, Cummins Q5K19, Q5K23

Options

- Suction jib assembly complete with heavy duty winch and associated winch components, chains and hose hangers
- Flow meters in discharge pipework
- Pressure transducers for both suction and discharge
- Solar panels
- Cornell CO-Pilot for remote package health monitoring
- Flow switch on suction spool
- Pump material in CD4MCu or Super Duplex construction



CORNELL 200/180

Diesel engine driven pump package

TECHNICAL DATA

Pump: 6822MX-RP-EM18DB-1

| | |
|----------------------------|--------------------------------------|
| Max flow | 268lps / 965m3/h |
| Shut off head | 195mtrs |
| BEP Head | 180mtrs |
| BEP Flow | 211lps / 761m3/h |
| Maximum operating speed | 1900rpm |
| Solids handling capability | 50mm / 2" |
| BEP % | 75% |
| Suction size | 200mm / 8" |
| Discharge size | 150mm / 6" |
| SAE mount | SAE #1 |
| Wear ring | CA6NM stainless steel |
| Impeller | CA6NM stainless steel |
| Volute | Ductile Iron |
| Shaft | 4140 tool steel |
| Shaft sleeve | 416 stainless steel |
| Back plate | Ductile Iron |
| Bearing frame | Ductile Iron |
| Mechanical seal | Tungsten Carbide VS. Silicon Carbide |
| Cyclo-seal | Cornell patented cyclo-seal design |

Engine Options

| | |
|---------------|---------------|
| CAT C18 | CAT C27 |
| Cummins Q5K19 | Cummins Q5K23 |

