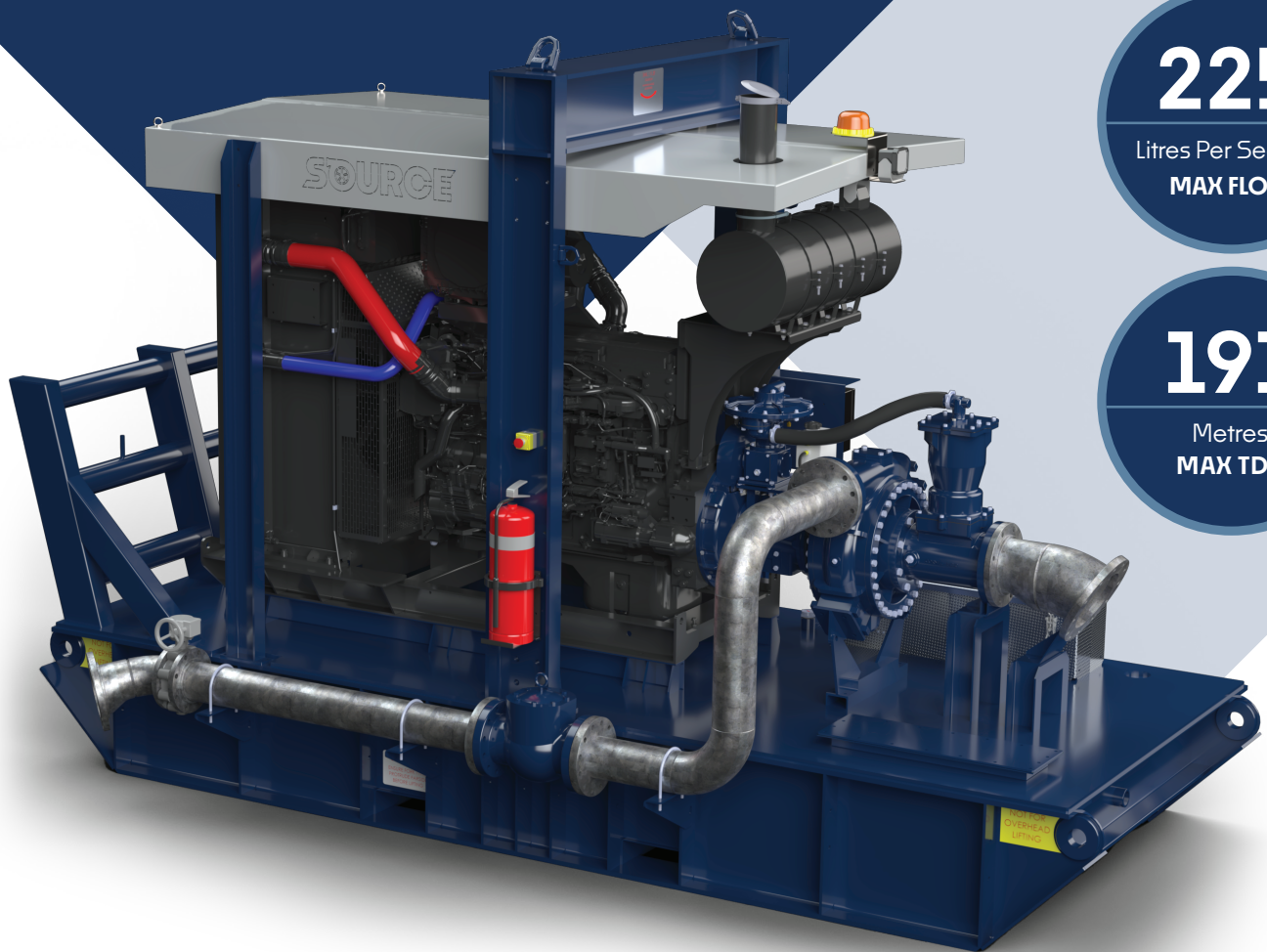


## SPECIFICATION SHEET

# CORNELL 150/140

Diesel engine driven pump package



# 225

Litres Per Second  
**MAX FLOW**

# 191

Metres  
**MAX TDH**



### HEAVY DUTY

Designed and built to last in the harshest environments whilst providing ultimate performance



### HIGH FLOW

Industry leading flow capability whilst also handling significant sized solids



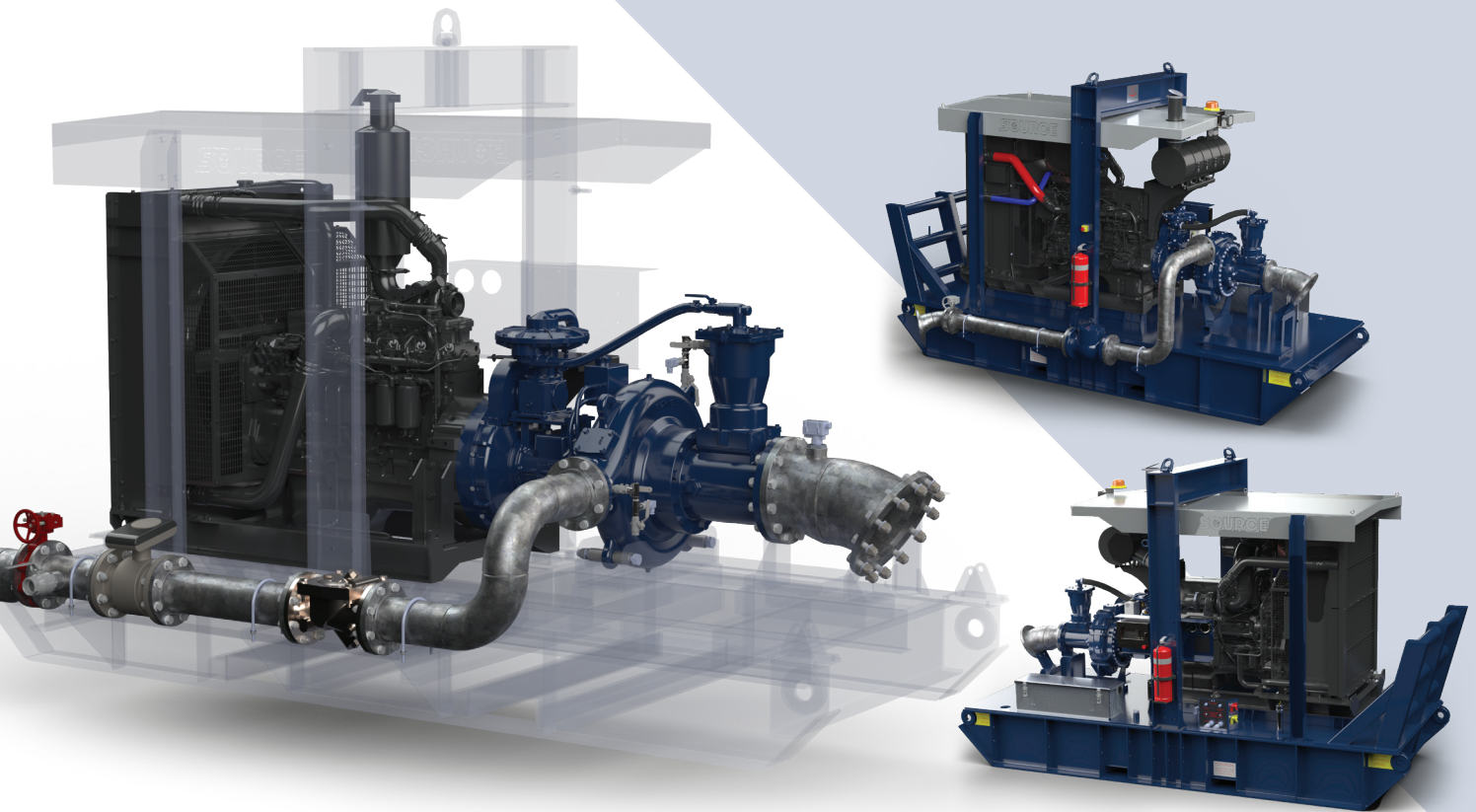
### HIGH HEAD

Superior efficiency at unmatched high discharge heads

# CORNELL 150/140

## Diesel engine driven pump package

**SOURCE**  
Bespoke Pumping Solutions

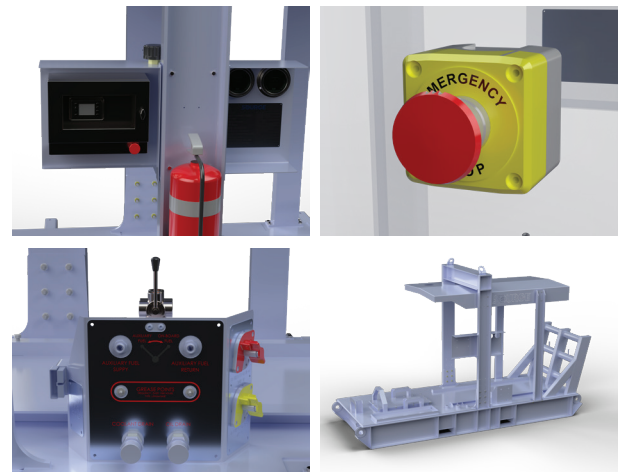


### Standard features

- Heavy duty structural steel fabricated skid base complete with canopy over engine with single or dual load rated lifting points on approved lifting beam
- Internal fuel tank custom designed to desired capacity
- Heavy duty nudge bar
- Front and rear eyelet tie down points for transportation
- Fabricated to A54100 & A51554.1
- Two heavy duty 12v batteries in aluminium enclosure
- Control panel on non discharge side housing engine and electrical controls, as well as suction and discharge pressure gauges
- Centralised service panel with 2-pole starter and battery isolation switches, greasing points for pump, Anderson socket, engine coolant and oil drain, build plate identifying major equipment and operating parameters, and three way fuel diverter valve if required
- Additional emergency stop on discharge side of the skid
- Mine spec Work light over looking pump (Additional for engine bay if required)
- Mine spec beacon
- Fire extinguisher
- Engine heat shield and blankets
- Suction spool
- Discharge pipework with appropriately sized check valve and geared butterfly valve terminated at the rear if the skid
- Engines CAT C13, Cummins X15

### Options

- Suction jib assembly complete with heavy duty winch and associated winch components, chains and hose hangers
- Flow meters in discharge pipework
- Pressure transducers for both suction and discharge
- Solar panels
- Cornell CO-Pilot for remote package health monitoring
- Flow switch on suction spool
- Pump material in CD4MCu or Super Duplex construction



# CORNELL 150/140

## Diesel engine driven pump package

### TECHNICAL DATA

#### Pump: 6NHTB19-RP-EM18DB-1

Max flow	225lps / 813m <sup>3</sup> /h
Shut off head	191mtrs
BEP Head	145mtrs
BEP Flow	150lps / 542m <sup>3</sup> /h
Maximum operating speed	2100rpm
Solids handling capability	50mm / 2"
BEP %	72%
Suction size	200mm / 8"
Discharge size	150mm / 6"
SAE mount	SAE #1
Wear ring	CA6NM stainless steel
Impeller	CA6NM stainless steel
Volute	Cast Iron
Shaft	4140/4142 BD
Shaft sleeve	416 stainless steel
Back plate	Cast Iron
Bearing frame	Cast Iron
Mechanical seal	Tungsten Carbide VS. Silicon Carbide
Cyclo-seal	Cornell patented cyclo-seal design

#### Engine Options

CAT C13  
Cummins X15

