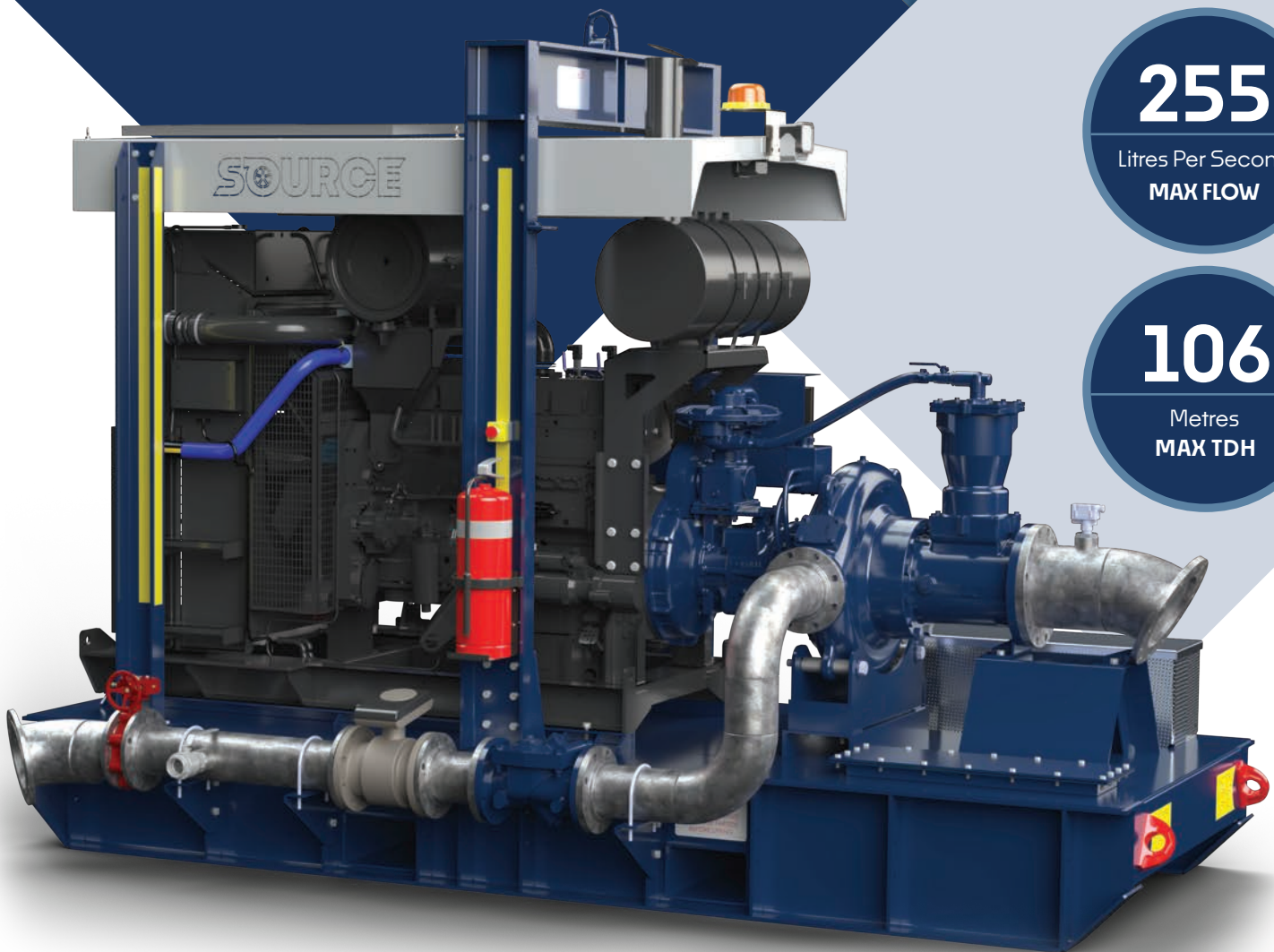


SPECIFICATION SHEET

CORNELL 200/100

Diesel engine driven pump package



255

Litres Per Second
MAX FLOW

106

Metres
MAX TDH



HEAVY DUTY

Designed and built to last in the harshest environments whilst providing ultimate performance



HIGH FLOW

Industry leading flow capability whilst also handling significant sized solids



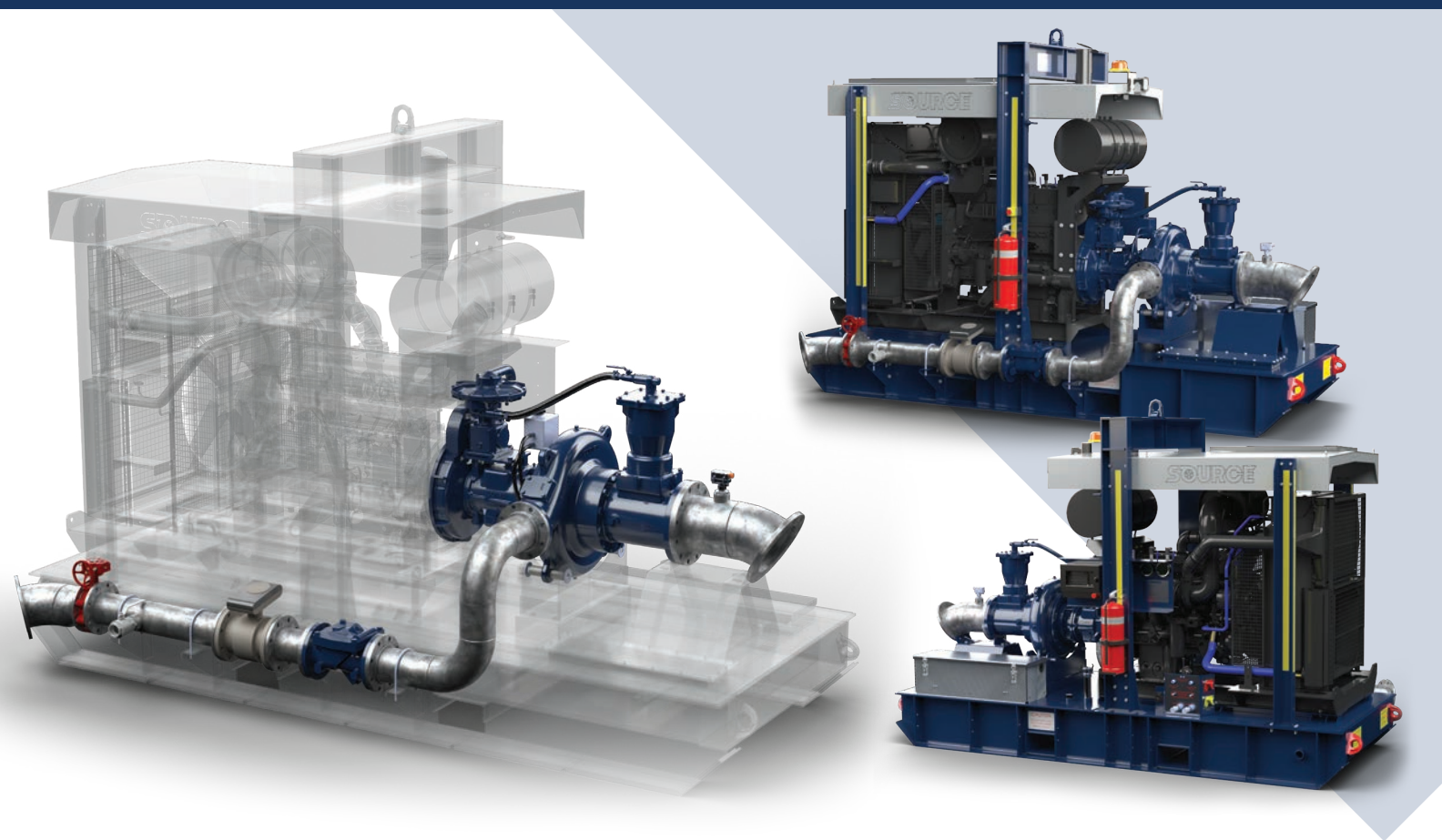
SOLID HANDLING

Significant solids handling capabilities whilst providing superior efficiency

CORNELL 200/100

Diesel engine driven pump package

SOURCE
Bespoke Pumping Solutions

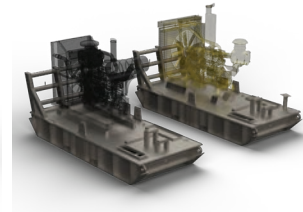
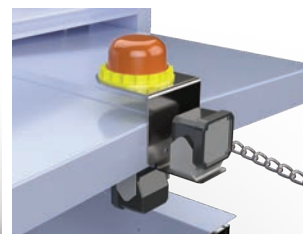


Standard features

- Heavy duty structural steel fabricated skid base complete with canopy over engine with single or dual load rated lifting points on approved lifting beam
- Internal fuel tank custom designed to desired capacity
- Heavy duty nudge bar
- Front and rear eyelet tie down points for transportation
- Fabricated to A54100 & A51554.1
- Two heavy duty 12v batteries in aluminium enclosure
- Control panel on non discharge side housing engine and electrical controls, as well as suction and discharge pressure gauges
- Centralised service panel with 2-pole starter and battery isolation switches, greasing points for pump, Anderson socket, engine coolant and oil drain, build plate identifying major equipment and operating parameters, and three way fuel diverter valve if required
- Additional emergency stop on discharge side of the skid
- Mine spec Work light over looking pump (Additional for engine bay if required)
- Mine spec beacon
- Fire extinguisher
- Engine heat shield and blankets
- Suction spool
- Discharge pipework with appropriately sized check valve and geared butterfly valve terminated at the rear if the skid
- Engines CAT C11, C13, Cummins Q5M11, X15

Options

- Suction jib assembly complete with heavy duty winch and associated winch components, chains and hose hangers
- Flow meters in discharge pipework
- Pressure transducers for both suction and discharge
- Solar panels
- Cornell CO-Pilot for remote package health monitoring
- Flow switch on suction spool
- Pump material in CD4MCu or Super Duplex construction



CORNELL 200/100

Diesel engine driven pump package

TECHNICAL DATA

Pump: 6NHTB-RP-EM18DB-1

Max flow	255lps / 918m3/h
Shut off head	106mtrs
BEP Head	67mtrs
BEP Flow	233lps / 842m3/h
Maximum operating speed	1770rpm
Solids handling capability	86mm / 3.38"
BEP %	80%
Suction size	250mm / 10"
Discharge size	150mm / 6"
SAE mount	SAE #1
Wear ring	CA6NM stainless steel
Impeller	CA6NM stainless steel
Volute	Cast Iron
Shaft	4140/4142 BD
Shaft sleeve	416 stainless steel
Back plate	Cast Iron
Bearing frame	Cast Iron
Mechanical seal	Tungsten Carbide VS. Silicon Carbide
Cyclo-seal	Cornell patented cyclo-seal design

Engine Options

Speed	Impeller Dia.	Style	Volute	Solids Dia.	N ₂	Suction	Discharge	No. Vanes
VARIOUS	17.50"	ENCLOSED	SINGLE	3.38"	1880	10"	6"	2

CAT C11	CAT C13
Cummins QSM11	Cummins X15

Performance shown are for S.G. 1.0
CAT motor, (non-optional configuration)
Other mounting styles or S.G. may require curve adjustments.

Cornell Pump Company	Clackamas, Oregon	03 04/25/19 FM	MODEL: 6NHTB	CURVE NO: 6NHTBVA
		02 01/23/18 FM	TYPE SOLIDS HANDLING	

