

## SPECIFICATION SHEET

# CORNELL 250/70

Diesel engine driven pump package



**321**

Litres Per Second  
**MAX FLOW**

**195**

Metres  
**MAX TDH**



### HEAVY DUTY

Designed and built to last in the harshest environments whilst providing ultimate performance



### HIGH FLOW

Industry leading flow capability whilst also handling significant sized solids



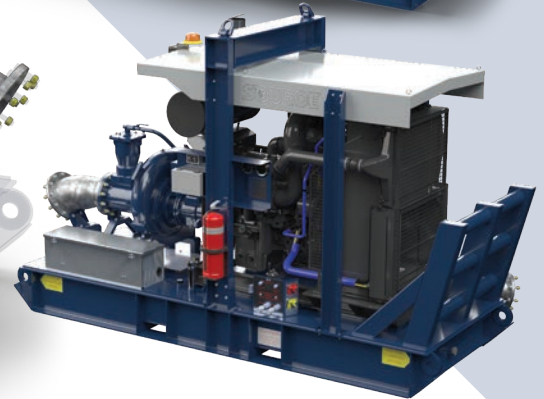
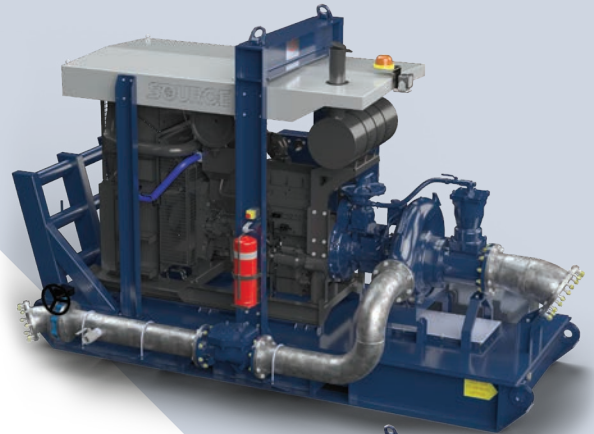
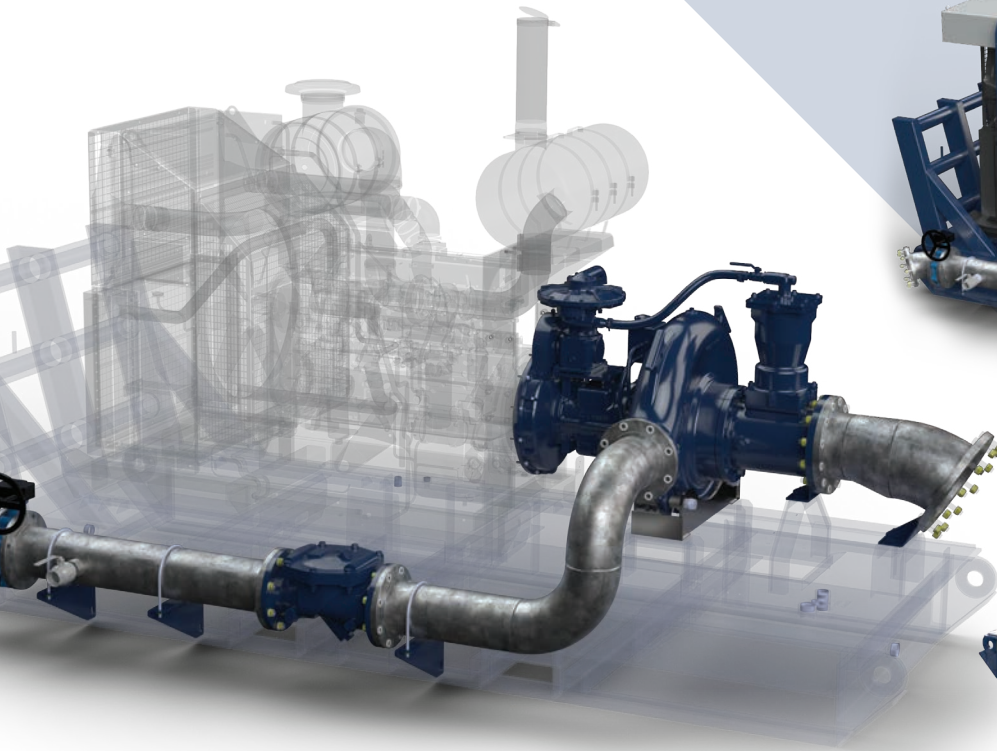
### SOLID HANDLING

Significant solids handling capabilities whilst providing superior efficiency

# CORNELL 250/70

## Diesel engine driven pump package

**SOURCE**  
Bespoke Pumping Solutions

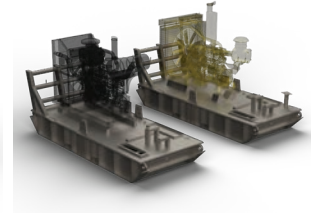
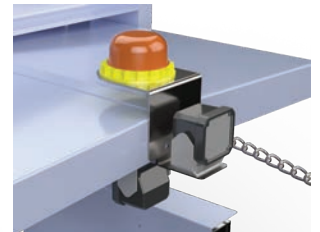


### Standard features

- Heavy duty structural steel fabricated skid base complete with canopy over engine with single or dual load rated lifting points on approved lifting beam
- Internal fuel tank custom designed to desired capacity
- Heavy duty nudge bar
- Front and rear eyelet tie down points for transportation
- Fabricated to A54100 & A51554.1
- Two heavy duty 12v batteries in aluminium enclosure
- Control panel on non discharge side housing engine and electrical controls, as well as suction and discharge pressure gauges
- Centralised service panel with 2-pole starter and battery isolation switches, greasing points for pump, Anderson socket, engine coolant and oil drain, build plate identifying major equipment and operating parameters, and three way fuel diverter valve if required
- Additional emergency stop on discharge side of the skid
- Mine spec Work light over looking pump (Additional for engine bay if required)
- Mine spec beacon
- Fire extinguisher
- Engine heat shield and blankets
- Suction spool
- Discharge pipework with appropriately sized check valve and geared butterfly valve terminated at the rear if the skid
- Engines CAT C11, C13, Cummins Q5M11, X15

### Options

- Suction jib assembly complete with heavy duty winch and associated winch components, chains and hose hangers
- Flow meters in discharge pipework
- Pressure transducers for both suction and discharge
- Solar panels
- Cornell CO-Pilot for remote package health monitoring
- Flow switch on suction spool
- Pump material in CD4MCu or Super Duplex construction





# CORNELL 250/70

## Diesel engine driven pump package

### TECHNICAL DATA

#### Pump: 8NHTA-RP-EM18DB-1

Max flow	321lps / 1158m3/h
Shut off head	195mtrs
BEP Head	67mtrs
BEP Flow	233lps / 840m3/h
Maximum operating speed	1800rpm
Solids handling capability	86mm / 3.38"
BEP %	82%
Suction size	250mm / 10"
Discharge size	200mm / 8"
SAE mount	SAE #1
Wear ring	CA6NM stainless steel
Impeller	ImpCA6NM stainless steel
Volute	Cast Iron
Shaft	4140/4142 BD
Shaft sleeve	416 stainless steel
Back plate	Cast Iron
Bearing frame	Cast Iron
Mechanical seal	Tungsten Carbide VS. Silicon Carbide
Cyclo-seal	Cornell patented cyclo-seal design

#### Engine Options

CAT C11	CAT C13
Cummins QSM11	Cummins X15

