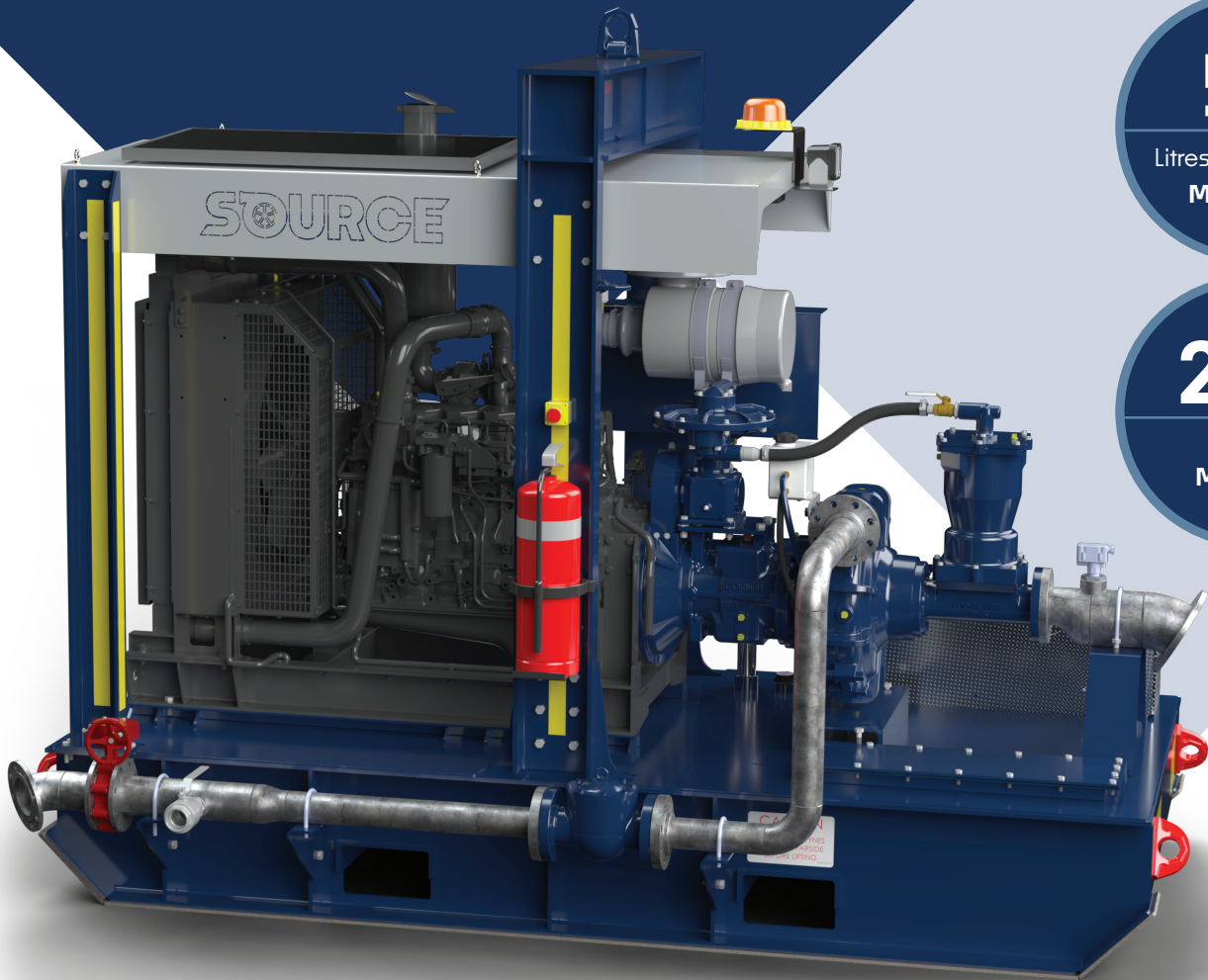
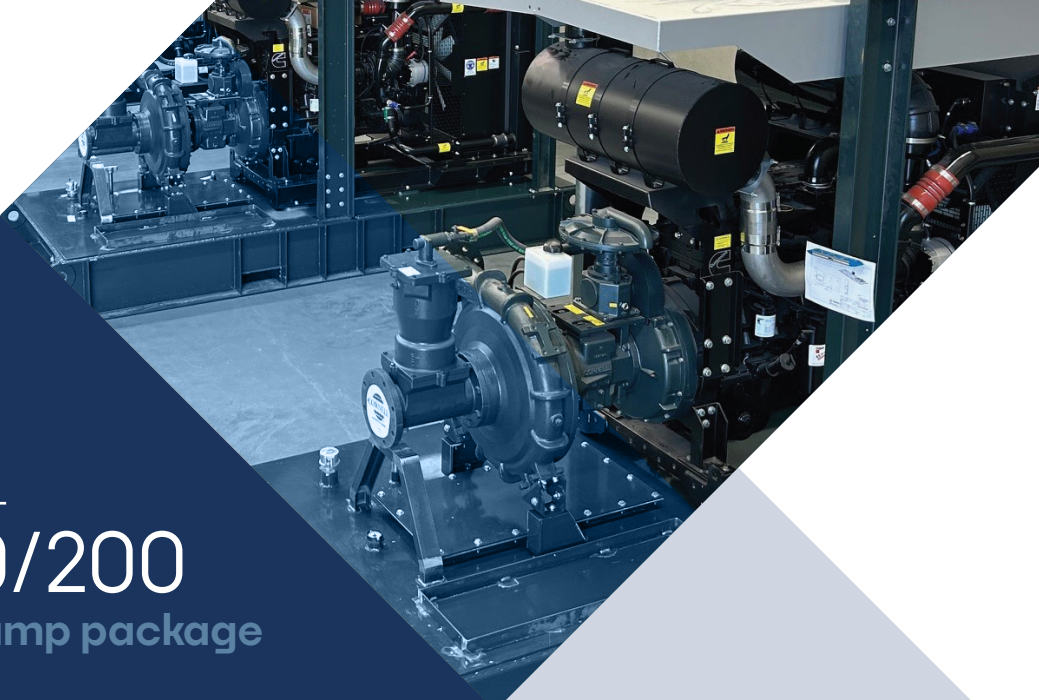


SPECIFICATION SHEET

CORNELL 40/200

Diesel engine driven pump package



54

Litres Per Second
MAX FLOW

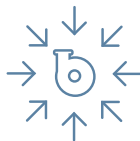
256

Metres
MAX TDH



HEAVY DUTY

Designed and built to last in the harshest environments whilst providing ultimate performance



COMPACT

Efficiently designed, minimising the products footprint whilst providing maximum output



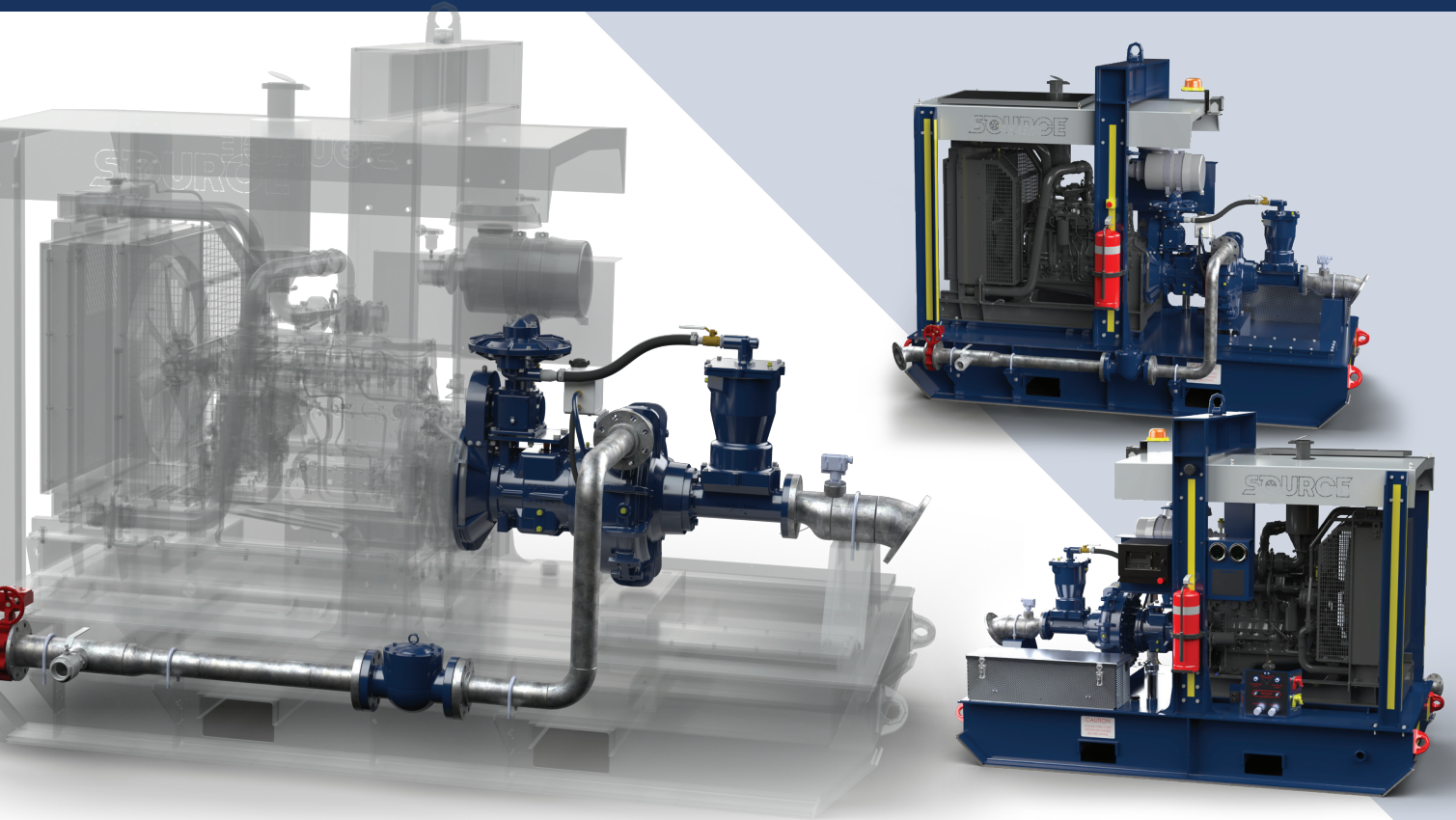
HIGH HEAD

Superior efficiency at unmatched high discharge heads

CORNELL 40/200

Diesel engine driven pump package

SOURCE
Bespoke Pumping Solutions

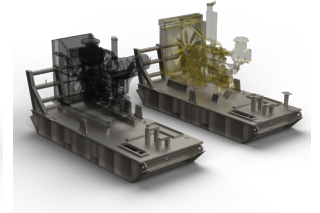
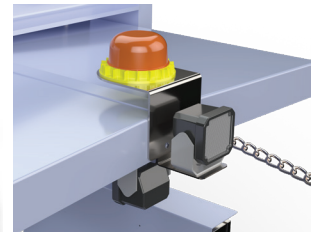
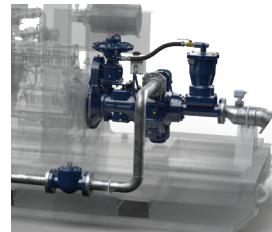


Standard features

- Heavy duty structural steel fabricated skid base complete with canopy over engine with single or dual load rated lifting points on approved lifting beam
- Internal fuel tank custom designed to desired capacity
- Heavy duty nudge bar
- Front and rear eyelet tie down points for transportation
- Fabricated to A54100 & A51554.1
- Two heavy duty 12v batteries in aluminium enclosure
- Control panel on non discharge side housing engine and electrical controls, as well as suction and discharge pressure gauges
- Centralised service panel with 2-pole starter and battery isolation switches, greasing points for pump, Anderson socket, engine coolant and oil drain, build plate identifying major equipment and operating parameters, and three way fuel diverter valve if required
- Additional emergency stop on discharge side of the skid
- Mine spec Work light over looking pump (Additional for engine bay if required)
- Mine spec beacon
- Fire extinguisher
- Engine heat shield and blankets
- Suction spool
- Discharge pipework with appropriately sized check valve and geared butterfly valve terminated at the rear if the skid
- Engines CAT C7.1, Cummins Q5B6.7

Options

- Suction jib assembly complete with heavy duty winch and associated winch components, chains and hose hangers
- Flow meters in discharge pipework
- Pressure transducers for both suction and discharge
- Solar panels
- Cornell CO-Pilot for remote package health monitoring
- Flow switch on suction spool
- Pump material in CD4MCu or Super Duplex construction



CORNELL 40/200

Diesel engine driven pump package

SOURCE
Bespoke Pumping Solutions

TECHNICAL DATA

Pump: 3419MX-RP-EM18DB-1

Max flow	54lps / 195m ³ /h
Shut off head	256mtrs
BEP Head	229mtrs
BEP Flow	45lps / 163m ³ /h
Maximum operating speed	2400rpm
Solids handling capability	19mm / 0.75"
BEP %	55%
Suction size	100mm / 4"
Discharge size	75mm / 3"
SAE mount	SAE #1
Wear ring	CA6NM stainless steel
Impeller	CA6NM stainless steel
Volute	Ductile Iron
Shaft	17-4 PH Stainless Steel
Shaft sleeve	416 stainless steel
Back plate	Ductile Iron
Bearing frame	Ductile Iron
Mechanical seal	Tungsten Carbide VS. Silicon Carbide
Cyclo-seal	Cornell patented cyclo-seal design

Engine Options

CAT C7.1
Cummins QSB6.7

